



Horizontal Well Artificial Lift Projects

6-in. Horizontal Well Facility

This facility is designed to study multiphase flow behavior and to test artificial lift performance in a horizontal well. The effect of trajectories and perforations on flow behavior and artificial lift applications can be studied using this facility.

Key Specifications

Fluids

Gas: Air
Water: Tap Water

Operating Conditions¹

Maximum Pressure: 30 psig
Temperature: Ambient
Gas Flow Rate: 0 to 1.02 MMSCFD (Superficial Gas Velocity – 0 to 60 ft/s)
Water Flow Rate: 0 to 302 BPD (Superficial Liquid Velocity – 0 to 0.1 ft/s)

¹Operating conditions are for the current project and are subject to change depending upon the project

Test Section

Pipe Material: Acrylic
Diameter of Pipe: 6 inch
Total pipe length: 236 ft (472 D) lateral, 60 ft (120 D) vertical
Test Section: 176 ft (130 D)
Developing Region: 60.0 ft (120 D)
Lateral Feeds: 3
Inclination Angles: -3 to 3 degree
Configurations: Toe-up, toe-down and multiple undulations
Additional Capabilities: Sump section for artificial lift application

Instrumentation and Flow Characteristics

Measured Parameters	Instrumentation
Liquid Holdup	<ul style="list-style-type: none"> Quick Closing Valves Conductivity Probes
	<ul style="list-style-type: none"> Basler Cameras



Horizontal Well Artificial Lift Projects

Flow Pattern	<ul style="list-style-type: none"> • Conductivity Probes
Pressure Gradient	<ul style="list-style-type: none"> • Differential Pressure Transducer
Film Reversal	<ul style="list-style-type: none"> • Colored Brine Injection System • Basler Cameras • Conductivity Probes
Liquid Film Height	<ul style="list-style-type: none"> • Conductivity Probes

Detailed Specifications on Liquid and Gas Supply Systems

Air Compressor

Model: Gardner Denver (GD – ES II 60 Hz)
 Power: 200 HP
 Flow Rate: 1030 SCFM
 Discharge Pressure: 100 psig
 Suction Pressure: 0 psig

Air Flow Meter

Model: Endress Hauser Promass F
 Nominal Mass Flow Rate: 1002 kg/h
 Max. Mass Flow Rate: 2004 kg/h
 Measurement Uncertainty: $\pm 0.35\%$ of Flow Rate

Water Pump

Model: Dayton Submersible Pump 1LSP1
 Discharge Rate: 35 GPM
 Discharge Diameter: 2 in.

Water Flow Meter

Model: Endress Hauser Promass F
 Nominal Mass Flow Rate: 500 kg/h
 Max. Mass Flow Rate: 1000 kg/h
 Measurement Uncertainty: $\pm 0.05\%$ of Flow Rate



Horizontal Well Artificial Lift Projects

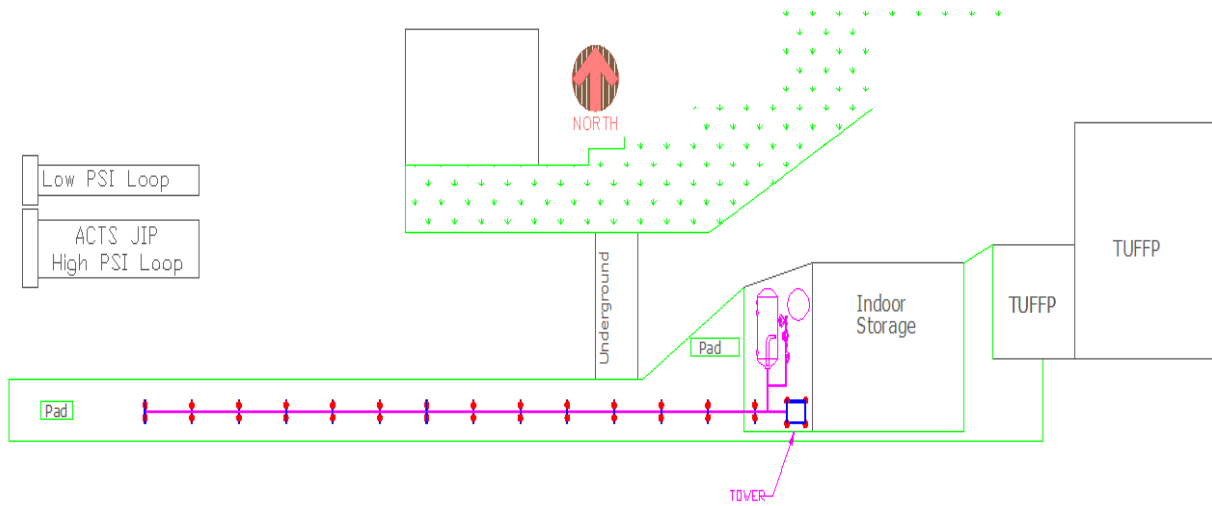


Figure 1. Schematic of Test Facility Location

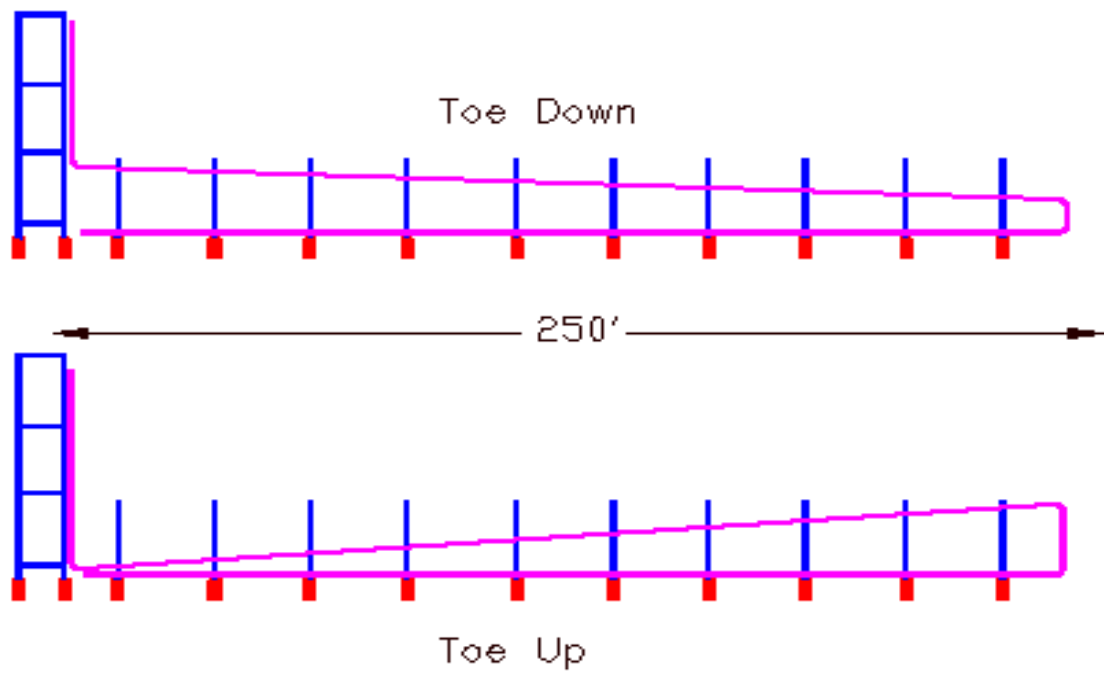


Figure 2. Schematic of Toe-Up and Toe-Down Configurations



Horizontal Well Artificial Lift Projects

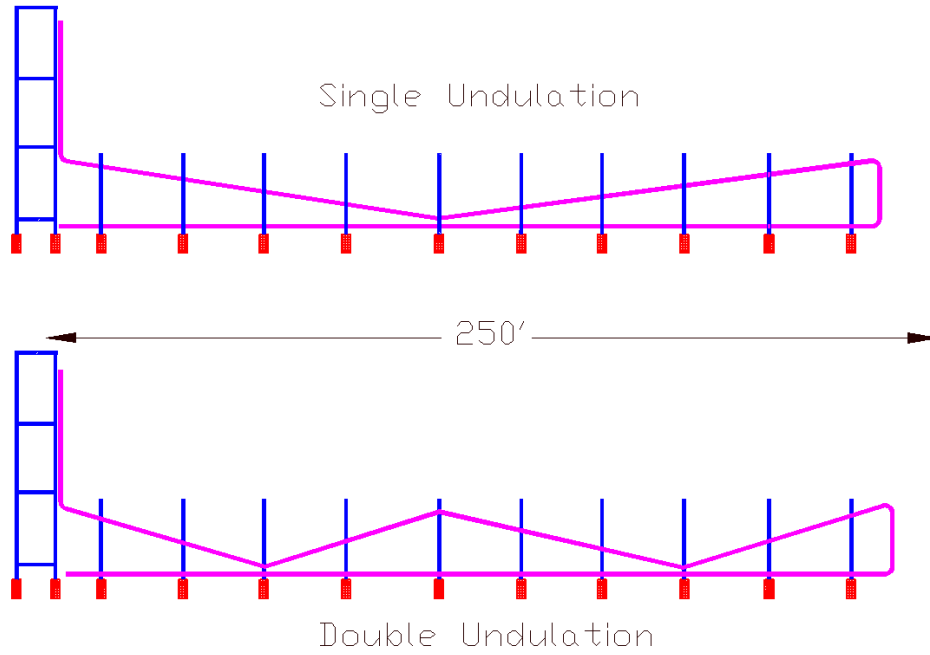


Figure 3. Schematic of Undulated Configurations

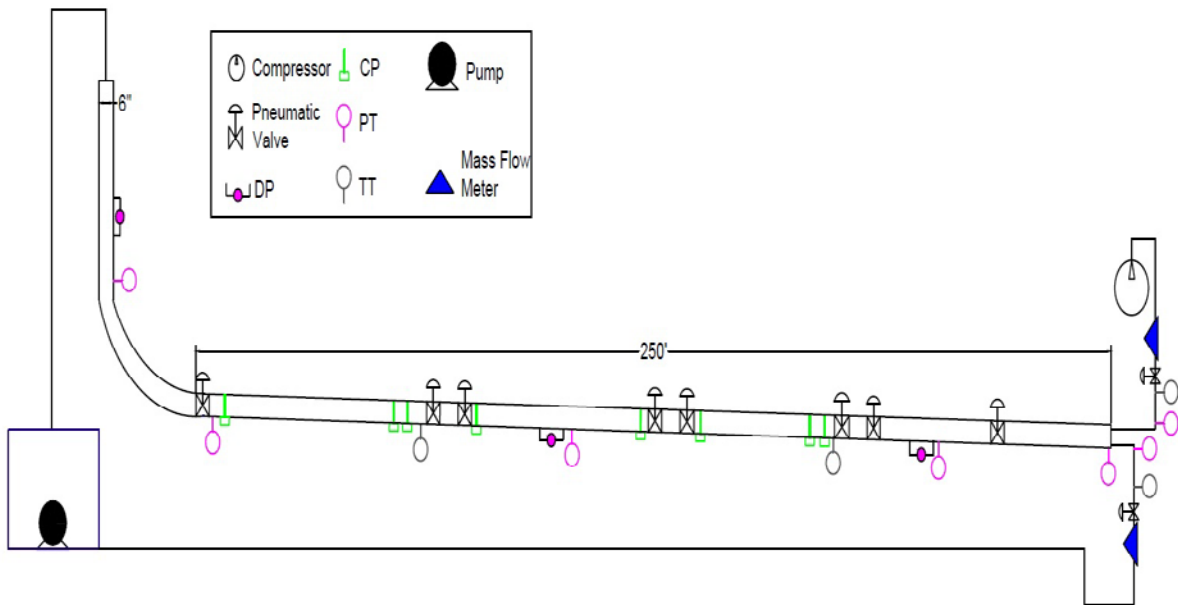


Figure 4. Schematic of Test Section Configuration and Instrumentation



Horizontal Well Artificial Lift Projects



Figure 5. Tower of 6-in. Horizontal Well Facility

TU Horizontal Well Artificial Lift Projects
University of Tulsa
2450 East Marshall,
Tulsa, Oklahoma 74110

www.tuhwalp.ens.utulsa.edu
Phone: (918) 631-5110
E-Mail: kelley@utulsa.edu



Horizontal Well Artificial Lift Projects



Figure 6. View of 6-in. Horizontal Well Facility

TU Horizontal Well Artificial Lift Projects
University of Tulsa
2450 East Marshall,
Tulsa, Oklahoma 74110

www.tuhwalp.ens.utulsa.edu
Phone: (918) 631-5110
E-Mail: kelley@utulsa.edu



Horizontal Well Artificial Lift Projects



Figure 7. View of the horizontal section for 6-in. Horizontal Well Facility

TU Horizontal Well Artificial Lift Projects
University of Tulsa
2450 East Marshall,
Tulsa, Oklahoma 74110

www.tuhwalp.ens.utulsa.edu
Phone: (918) 631-5110
E-Mail: kelley@utulsa.edu